

JCM INDUSTRIES

P. O. Box 1220, Nash, TX 75569-1220

Phone 800-527-8482 or 903-832-2581

Fax 800-874-9524 or 903-838-6260

www.jcmindustries.com

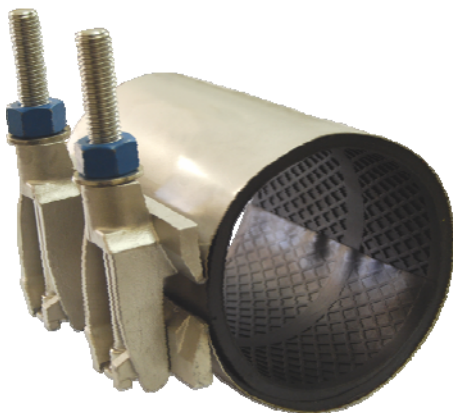
Typical Specification

JCM 151 All Stainless Gas Repair Clamp Couplings (sizes 2" – 8")

All full circumferential single band repair clamps 2" and larger shall have a minimum material standard of certifiable prime 304 stainless steel band; low profile CF-8 Cast Stainless Steel lugs (equivalent to 304 stainless steel) with mutually supporting sliding fingers; minimum 5/8" 304 stainless steel, oval neck track head, replaceable bolts and nuts, and a Nitrile Butadiene Rubber (NBR, Buna-N) gridded gasket with tapered lap joint ends and a 304 stainless steel bridge plate molded flush into the gasket. Gaskets in sizes 3" and larger shall be 1/4" thick. Clamps shall be JCM 151 All Stainless Steel Gas Repair Clamp or approved equal.

JCM 151 All Stainless Gas Repair Clamp Couplings (sizes 10" and larger)

All full circumferential single band repair clamps 10" and larger shall have a minimum material standard of 17 gauge certifiable prime 304 stainless steel band; heavy duty, low profile CF-8 Cast Stainless Steel lugs (equivalent to 304 stainless steel) with mutually supporting sliding fingers; minimum 3/4" 304 stainless steel, oval neck track head, replaceable bolts and nuts, and a Nitrile Butadiene Rubber (NBR, Buna-N) gridded gasket with tapered lap joint ends and a 304 stainless steel bridge plate molded flush into the gasket. To provide extra tightening capability, the band shall be permanently attached to the lugs. The attachment shall withstand a minimum of 100 ft. lbs. of torque per bolt. Clamp shall be similar to JCM 151 All Stainless Steel Gas Repair Clamp or approved equal.



JCM 151 All Stainless Gas Repair Clamp
Image reflects 7" width

Do not use for the repair of Polyethylene Gas Pipe. Suitable for reshaping and marking squeeze off locations.

This typical specification, provided by JCM Industries, is a proposed guideline for use by specifying agencies to ensure significant design and material features of this product are included within the agencies' individual specifications.



Effective 01.23.09

JCM INDUSTRIES

P. O. Box 1220, Nash, TX 75569-1220

Phone 800-527-8482 or 903-832-2581

Fax 800-874-9524 or 903-838-6260

www.jcmindustries.com

Material Specification

JCM 151 All Stainless Steel Universal Clamp Couplings

- Band:** 18-8 Type 304 Stainless Steel
Optional 18-8 Type 316 Stainless Steel available
- Lugs:** CF-8 Cast Stainless Steel (equivalent to 304 Stainless Steel)
Optional CF-8M Cast Stainless equal to 316 Stainless Steel available
- Bolts:** 18-8 Type 304 Stainless Steel
Optional 18-8 Type 316 Stainless Steel available
- Gasket:** Nitrile Butadiene Rubber (NBR, Buna-N) per ASTM D2000. Molded virgin rubber for natural gas, oil, mild acids, bases, water and sewage. Gasket temperature range -40°F to 180°F (-40°C – 82°C). For applications on high temperatures or chemical pipelines, contact JCM Industries Technical Services.

JCM 153 Service Clamp

Threaded

Outlet: 18-8 Type 304 Stainless Steel

Pressure Rating of 151 & 153 Gas Clamps

Cast Iron Pipe:

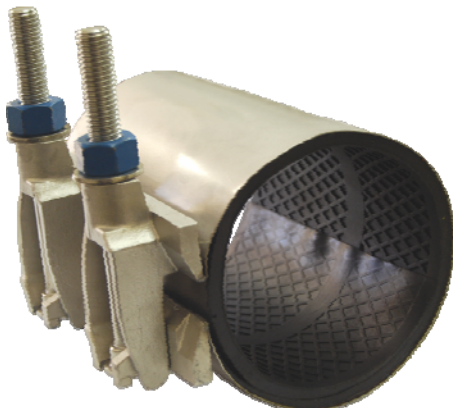
2" through 8" 100 PSI Gas
10" through 12" 60 PSI Gas

Steel Pipe:

2" through 8" 100 PSI Gas
10" through 12" 60 PSI Gas

For ranges and widths, see JCM Industries Industrial Products Manual.

Information based on data available at the date printed below and subject to change without notice.
Contact JCM Industries for amendments or changes.



JCM 151 All Stainless Gas Repair
Image reflects 7" width



Effective 01.23.09

JCM INDUSTRIES

P. O. Box 1220, Nash, TX 75569-1220
 Phone 800-527-8482 or 903-832-2581
 Fax 800-874-9524 or 903-838-6260
www.jcmindustries.com

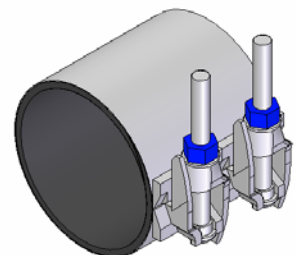
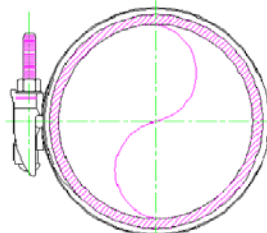
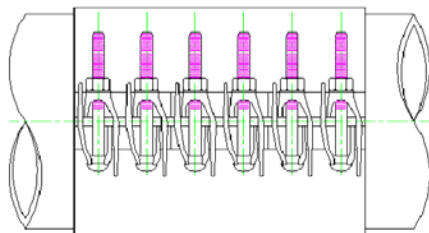
JCM 151 All Stainless Steel Gas Repair Clamp Design Specifications

Clamp Width (Inches)	Number of Bolts
6	2
7	2
12	4
15	4
18	6
24	8
30	10

Clamp Size (Inches)	Stainless Band Gauge
2 – 4.50	24
4.80 – 9.40	20
10 – 12	17

Clamp Size (Inches)	Gasket Thickness
2	3/16"
3 and larger	1/4"

Clamp Size (Inches)	Bolt Size
2 – 8	5/8"
10 – 12	3/4"



Effective 01.23.09