



1-877-PEPEMAN

Innovative Plumbing Solutions



Specialties for Copper and Steel/PVC pipe

- Hot Tapping Saddles/Sleeves/Fittings
- Hot Tap and Line Stop Machines
- Line Stopping Saddles/Sleeves/Fittings
- Pipe Freeze Kits
- Pipe Repair Clamps
- Deep Hole Saws and more...

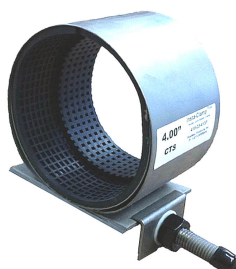


INSTA-CLAMP™

The Solder Joint Leak Repair Clamp

Eliminate Shutdowns & Draining the System

- Repairs copper tube solder joint leaks
- Easy installation, with no shutdown required
- Works on type M, L or K Copper
- Temperature Range: -40° to 212° F
- Simple two piece, one bolt design
- Installs in minutes
- Eliminates Shutdowns
- Available in 1/2" through 4" sizes



Insta-Clamp Plus



Insta-Clamp

Insta-Clamp™ / Insta-Clamp Plus™ Price List

Pipe Size	CTS-O.D.	Part No.	Price	Bolt
1/2"	.0625	416-03-063	\$ 29.50	
3/4"	.0875	416-03-088	\$ 31.50	3/8"-16 x 3"
1.00"	1.125	416-03-113	\$ 32.50	Carriage Bolt
1-1/4"	1.375	416-03-138	\$ 33.50	
1-1/2"	1.625	416-03-163	\$ 35.50	
2.00"	2.125	416-03-213	\$ 40.00	7/16"-14 x 4"
2-1/2"	2.625	416-03-263	\$ 45.00	Carriage Bolt
Insta-Clamp Plus™				
3.00"	3.125	416-03-313P	\$ 60.50	1/2"-13 x 6-1/2" Carriage Bolt
4.00"	4.125	416-03-413P	\$ 65.00	

Specifications:

- Panel: Stainless steel type 304
- Bridge plate: Stainless steel type 304
- Gasket: Molded step waffle NBR gasket design
- Suitable for a temperature range of -40° to +212° F.
- Rated at 150# PSI
- Lugs: Ductile iron per ASTM A536 with Galvanized plating finish
- Bolt and Nut: Zinc-Chromate finished carriage bolt, nut and washer



Distributed By:

PipeMan Products, Inc.

1647 Willow Pass Rd., #240 Concord, CA 94520 - TF: 1-877-PEPEMAN (747-3626)