

JCM INDUSTRIES

P. O. Box 1220, Nash, TX 75569-1220
Phone 800-527-8482 or 903-832-2581
Fax 800-874-9524 or 903-838-6260
www.icmindustries.com

Typical Specification

JCM 416 Weld On Tapping Outlet

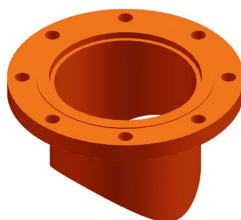
JCM 417 Weld On Tapping Sleeve

Tapping Sleeves shall be the high strength type made of a minimum material strength ASTM A36 or A516 GR 70 Steel or equal. Flanged outlet shall be ANSI/AWWA C207 Class D, ANSI 150 lb. drilling, recessed for tapping valve per MSS-SP60, outlets 2" – 12" rated for 175 PSI* maximum operating pressure. Tapping Sleeve shall be furnished with corrosion resistant shop coat paint primer.

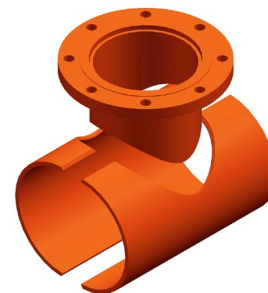
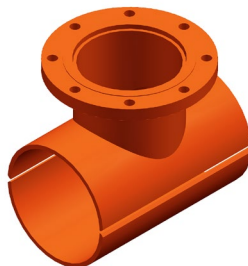
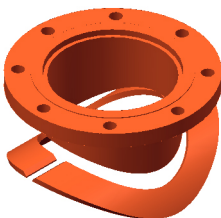
*Higher test and working pressure ratings available upon request, contact JCM Industries.

JCM 400 Series Tapping Sleeves are ANSI/NSF Standard 61, Annex G and ANSI/Standard 372 Certified.

JCM 400 Series Tapping Sleeves meet MSS-SP124 and ANSI/AWWA Standard C223 Fabricated Steel and Stainless Steel Tapping Sleeves as applicable.



Custom built Weld On Fittings are available in a variety of designs to be suit the application and end user needs. Contact JCM for specific submittal information.



This typical specification, provided by JCM Industries, is a proposed guideline for use by specifying agencies to ensure significant design and material features of this product are included within the agencies' individual specifications.



JCM INDUSTRIES

P. O. Box 1220, Nash, TX 75569-1220
Phone 800-527-8482 or 903-832-2581
Fax 800-874-9524 or 903-838-6260
www.jcmindustries.com

Material Specification

JCM 416 Weld On Tapping Outlet

JCM 417 Weld On Tapping Sleeve

Body: ASTM A36 or A516 GR 70 Steel or equal.

Flange: ANSI/AWWA C207 Class D, ANSI 150 lb. Drilling, recessed for tapping valve per MSS-SP60. Optional flanges available upon request.

Finish: Heavy coat of corrosion resistant shop coat primer.

Service

Rating: 2" to 12" Outlets: 175 PSI. Higher service rating available for specific applications and sizes.

