

JCM Model 502 Stainless Steel Service Saddle.

The JCM 502 Stainless Steel Service Saddle is engineered with the pipe in mind. Heavy duty construction with balanced bolt design provides the pipe support, bolt torque and gasket compression necessary for a successful, long term saddle installation.

Recommended for PS PVC, C-900 PVC, Ductile Iron, Cast Iron, Steel and other types of pipe. Not recommended for High Density Polyethylene Pipe (HDPE).

Durable bolting unit comprised of fabricated, interlocking finger lugs, 5/8" stainless steel studs, structurally designed lift bar and welded plates join together to provide torque values to efficiently compress the gasket without damage to the pipe wall.

Nuts furnished with anti-seize coating to prevent galling of hardware during installation.

Heavyweight threaded stainless steel outlet is available with IP/NPT or CC threads. Meets ANSI/AWWA C800

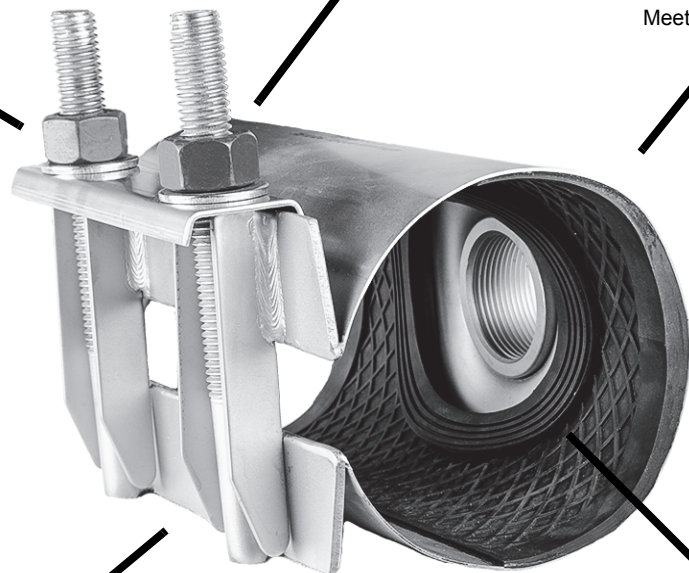
JCM 502 Service Saddle pressure rating:
200 PSI Working Pressure
225 PSI Test Pressure

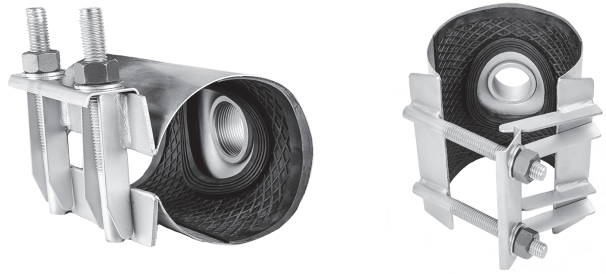
Standard 8" width through all sizes provides maximum pipe support.

Environmentally friendly passivation of the 304 Stainless Steel fabrication ensures a return to the stainless steel's natural corrosion resistant state to last the life of the pipeline. Per ASTM A380.

Raised outlet gasket with molded channels for maximum watertight contact between fitting and pipe wall.

Full circumferential stainless steel band provides utmost corrosion resistance and support to the pipe wall both at the tap location and the backside of the pipe wall. Per ASTM A240.





JCM 502 Stainless Steel Service Saddles
All 304 Stainless Steel Construction

Nominal Pipe Size	Range (Inches)	Saddle Number x Outlet Order Code	Saddle Width (Inches)	Available Outlets 3/4" & 1"	Available Outlets 1-1/4" - 2"	Approx. Weight (Lbs)
2"	2.38	502-0238 x --	8"	-	N/A	2.0
2-1/2"	2.63 - 2.88	502-0288 x --	8"	-	N/A	2.5
3	3.13 - 3.50	502-0350 x --	8"	-	N/A	3.0
3 - 4	3.80 - 4.13	502-0413 x --	8"	-	N/A	3.5
4	4.50 - 4.80 4.80 - 5.20	502-0480 x -- 502-0500 x --	8"	-	-	4.3
6	6.63 - 6.90 6.90 - 7.30	502-0690 x -- 502-0710 x --	8"	-	-	6.0
8	8.63 - 9.05 9.05 - 9.45	502-0905 x -- 502-0940 x --	8"	-	-	8.5
10	10.75 - 11.10 11.70 - 12.10	502-1110 x -- 502-1175 x --	8"	-	-	10.0
12	12.75 - 13.20 14.00 - 14.40	502-1320 x -- 502-1400 x --	8"	-	-	13.0

Outlet Size	IP Order Code	CC Order Code
3/4"	06	07
1"	08	09
1-1/4"	10	11
1-1/2"	12	13
2"	14	15

502 Saddle Number	Outlet Sizes Available	IP/CC
502-0238 thru 502-0413	3/4" - 1"	IP/CC
502-0480 thru 502-1320	3/4" thru 2"	IP/CC

MATERIAL SPECIFICATIONS - JCM 502 STAINLESS STEEL SERVICE SADDLE

- Band:** 18-8 Type 304 Stainless Steel. Per ASTM A240
- Outlet:** 18-8 Type 304 Stainless Steel Threaded Half Coupling. Meets ANSI/AWWA C800 as applicable.
- Bolting Assembly:** 18-8 Type 304 Stainless Steel. Per ASTM A240
- Lift Bar:** 18-8 Type 304 Stainless Steel. Per ASTM A240
- Fasteners:** 18-8 Type 304 Stainless Steel.
- Gasket:** EPDM - excellent resistance to aging factors including ozone, oxygen, elevated temperatures and fluctuations in weather. Recommended for service in hot water, steam and dry heat. Most popular application on chloramine. Suitable for other popular chemicals - ketones, alcohols, phosphate ester hydraulic fluids, glycols, dilute acids and alkalis. Maximum temperature 300°F wet. Not suitable for petroleum.
- Pressure Rating:** 200 PSI Working Pressure, 225 PSI Test Pressure

Recommended For:
 IPS PVC, C-900 PVC, Ductile Iron, Cast Iron, Steel and other types of pipe.
 Not recommended for High Density Polyethylene Pipe (HDPE).
 Environmentally friendly passivation of the 304 Stainless Steel fabrication ensures a return to the stainless steel's natural corrosion resistant state to last the life of the pipeline. Per ASTM A380.